

# 25005 25mm平脚无声两段阀芯

## 25mm flat base two phased without click sound cartridge

### 阀芯技术参数

#### Technical Characteristics of The Cartridge

开启角度：15° / 23°      旋转角度：100°      最高使用温度：90°C  
Max On/Off angel : 15° / 23°      Max Cold/Hot turning angel : 100°      Max temperature : 90°C

建议锁紧力矩：6~8Nm      冷热操作力矩：0.15~0.3Nm  
Tightness of hex nut torque : 6~8Nm      Cold / Hot operation torque : 0.15~0.3Nm

开关操作力矩：0.5~0.7Nm  
On/Off operation torque : 0.5~0.7Nm

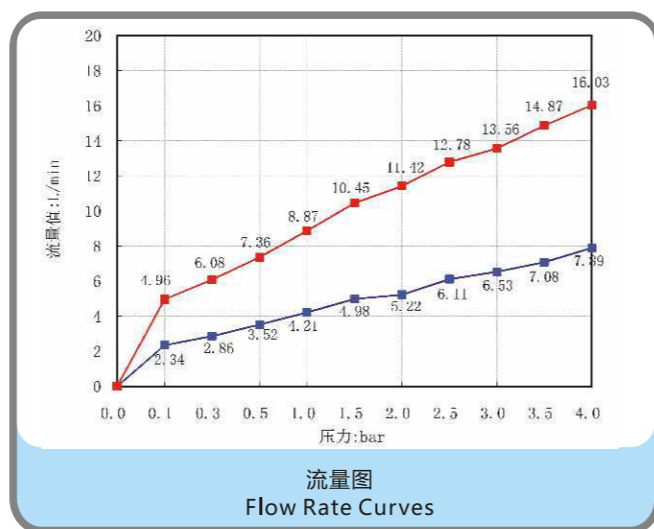
阀芯破坏强度：≥8Nm  
Broken torque : ≥8Nm

爆破压：≥35bar  
Burst pressure : ≥35bar

3bar水压下流量值：15°≥6L/min 23°≥12.5L/min  
Flow rate at 3bar : 15°≥6L/min 23°≥12.5L/min

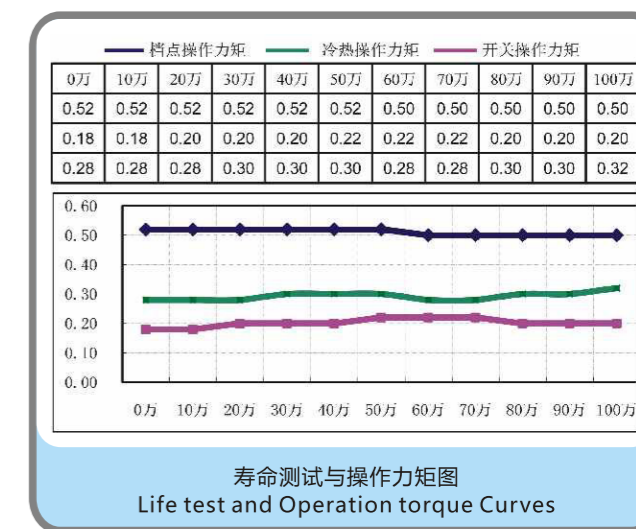
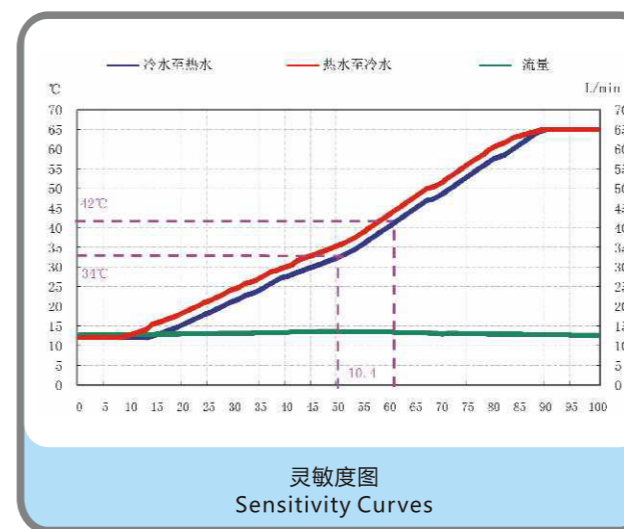
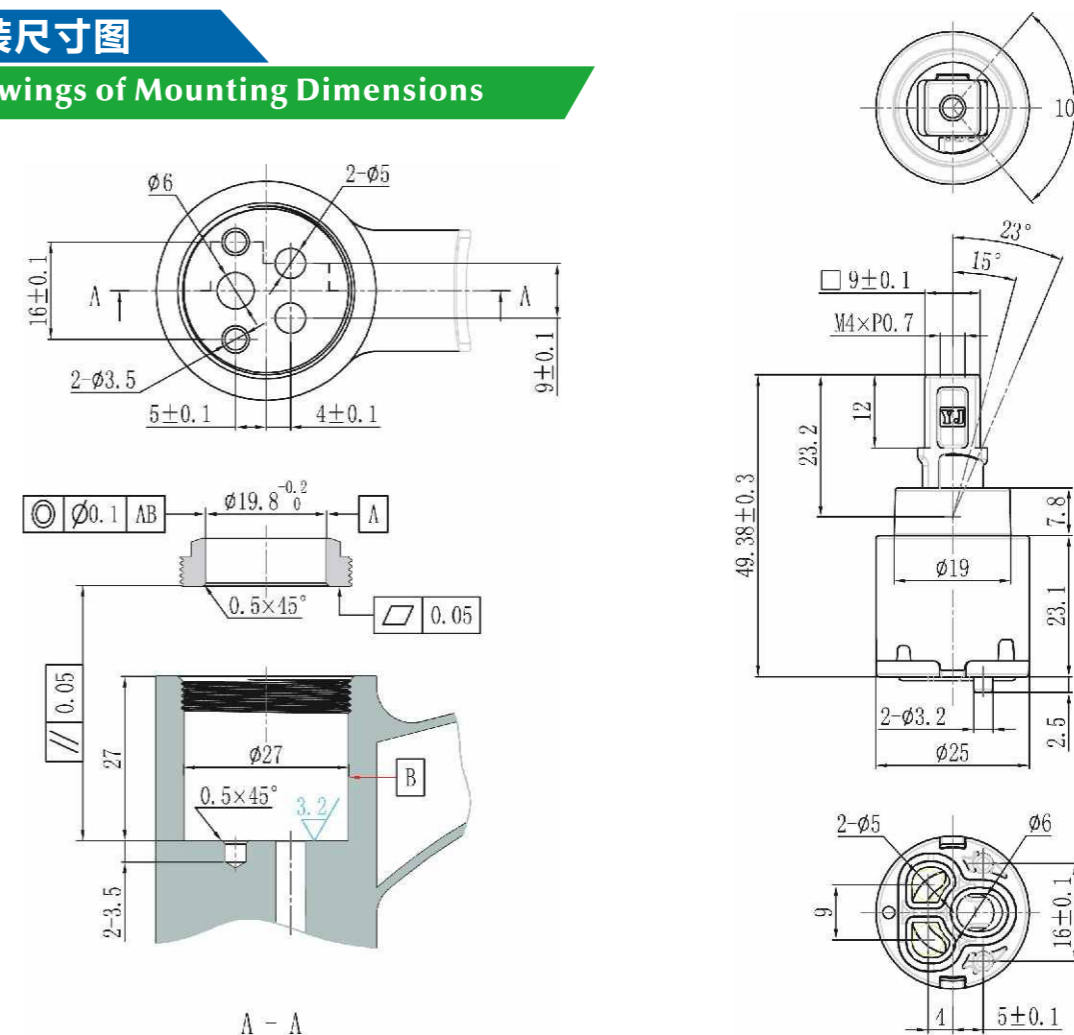
寿命测试：EN817:2008 140,000cycles  
ASME A 112.18.1-2008 1,000,000cycles

Life cycle test : EN817:2008 140,000cycles  
ASME A 112.18.1-2008 1,000,000cycles



### 安装尺寸图

#### Drawings of Mounting Dimensions



### 认证

#### Certification



DVGW/KTW



ACS