

40002 40mm高脚阀芯

40mm high base cartridge

阀芯技术参数

Technical Characteristics of The Cartridge

开启角度：23° 旋转角度：110° 最高使用温度：90°C
 Max On/Off angel : 23° Max Cold/Hot turning angel : 110° Max temperature : 90°C

建议锁紧力矩：10~15Nm 冷热操作力矩：0.2~0.4Nm (任何水温)

Tightness of hex nut torque : 10~15Nm

Cold / Hot operation torque : 0.2~0.4Nm
(Under any water temp)

开关操作力矩：0.15~0.35Nm (任何水温)

On/Off operation torque : 0.15~0.35Nm
(Under any water temp)

阀芯破坏强度：≥15Nm

Broken torque : ≥15Nm

爆破压：≥35bar

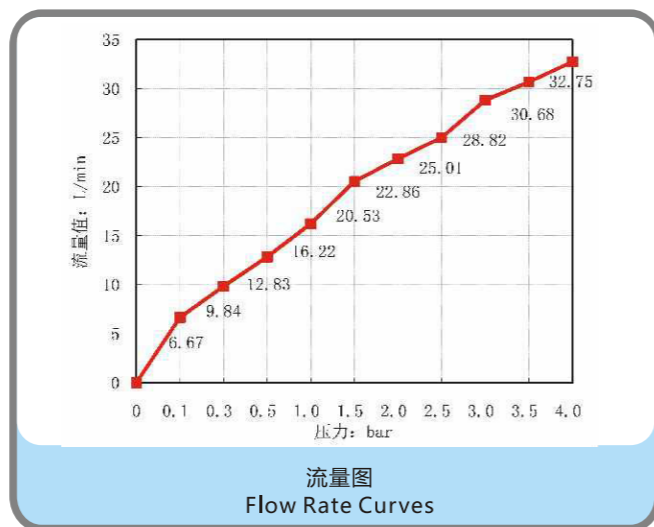
Burst pressure : ≥35bar

3bar水压下流量值：≥28L/min

Flow rate at 3bar : ≥28L/min

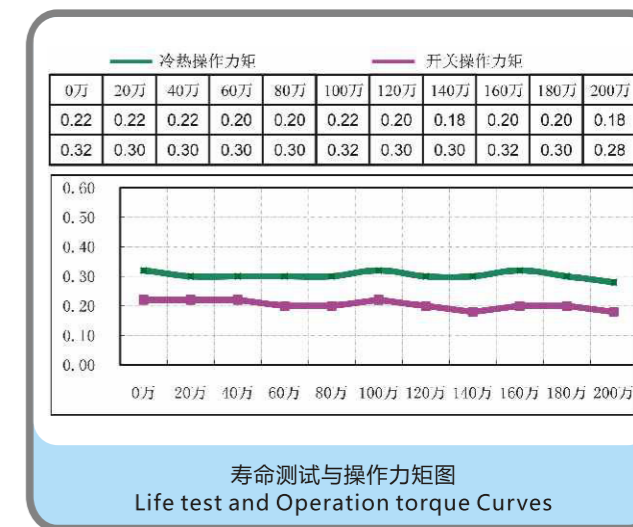
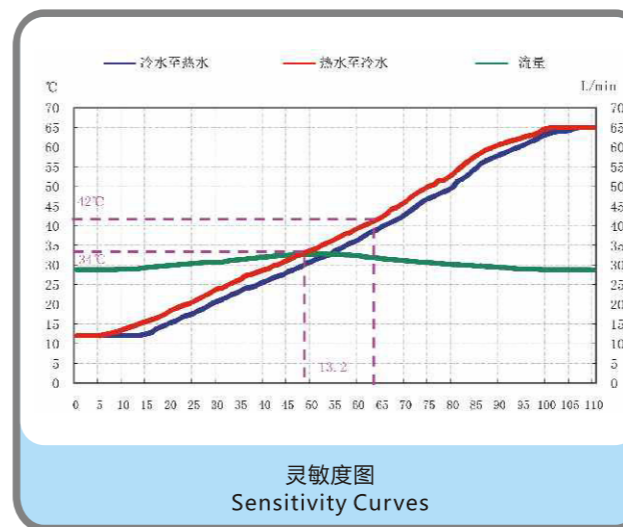
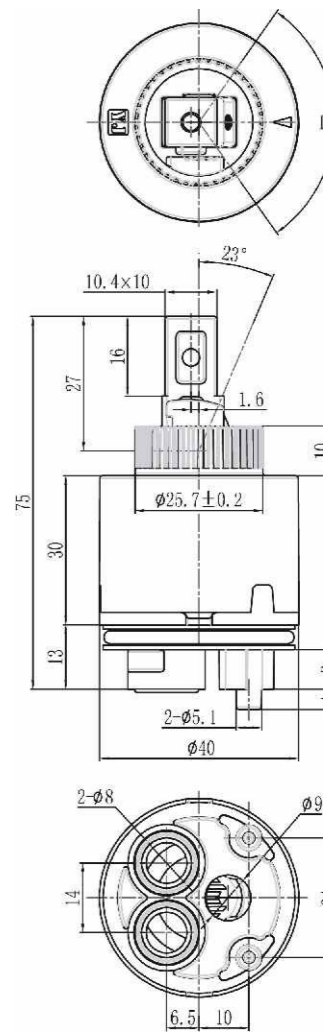
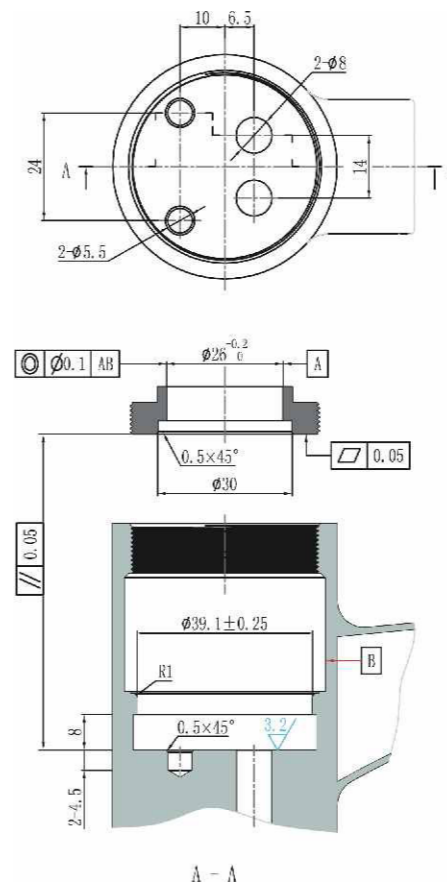
寿命测试：EN817:2008 280,000cycles
 ASME A 112.18.1-2008 2,000,000cycles

Life cycle test : EN817:2008 280,000cycles
 ASME A 112.18.1-2008 2,000,000cycles



安装尺寸图

Drawings of Mounting Dimensions



认证

Certification



DVGW/KTW



ACS

